


Paia Relief Route  
Advisory Group  
Meeting #10

Kaunoa Senior Center  
May 9, 2011



---

---

---

---

---

---

---

---

Opening Remarks

**Ken Tatsuguchi, P.E.**  
Engineering Planning Manager  
Hawaii Department of  
Transportation



---

---

---

---

---

---

---

---

Summary of Tonight's  
Meeting

- Status of Environmental Process
- Adjustments to Alignments based on Civil Engineering
- Environmental Studies being conducted
- Next Steps in EIS Preparation

---

---

---

---

---

---

---

---

# Status of Environmental Process

**Cheryl Soon, FAICP**  
**Project Manager**  
 SSFM International, Inc.




---

---

---

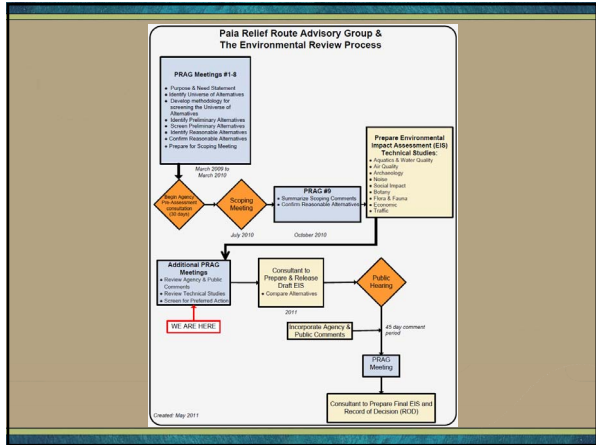
---

---

---

---

---




---

---

---

---

---


---

---

---

# Breakout Session

**Adjustments to Alignments based on Civil Engineering**




---

---

---

---

---


---

---

---

## Environmental Studies Being Conducted

**Doug Zang, AICP**  
SSFM International, Inc.



---

---

---

---

---

---

---

---

## Resources Evaluated for Draft EIS

- Faunal Resources
- Botanical Resources
- Aquatic Resources
- Cultural Resources
- Socioeconomic Environment
- Traffic & Transportation
- Air Quality & Noise
- Utilities
- Hazardous Materials
- Others



---

---

---

---

---

---

---

---

## Faunal, Botanical & Aquatic Resources

- Field work performed
- Reports being produced
- Any threatened or endangered species will be identified
- Mitigation will be recommended
- Agency consultation



---

---

---

---

---

---

---

---

### Cultural Resources

- Archeological and Historical
  - Reconnaissance of Alternatives performed
  - Archeological Inventory Survey (AIS) performed after selection of Preferred Alternative
- Cultural Impact Assessment (CIA)
  - Consultation letters sent April 20
  - Meetings with kupuna and organizations
  - CIA report to follow

---

---

---

---

---


---

---

---

### Socioeconomic Study

- Survey of businesses in Paia
  - What are the impacts of today's traffic situation and of development of the planned relief route
- Demographics
- Environmental Justice
- Community Resources



---

---

---

---

---


---

---

---

### Traffic & Transportation

- Intersection operations
- Roadway capacity
- Travel Speed
- Safety
- Alternative modes
- Data needed for air and noise analyses



---

---

---

---

---

---

---

---

## Air & Noise Analysis

- Air
  - Microscale (intersection-level)
  - Mesoscale (regional-level)
- Noise
  - Monitoring of existing noise levels
  - Modeling of future noise from traffic




---

---

---

---

---

---

---

---

---

---

## Next Steps in EIS Preparation

**Lance Manabe, P.E.**  
**Project Manager**  
 Hawaii Department of  
 Transportation




---

---

---

---

---

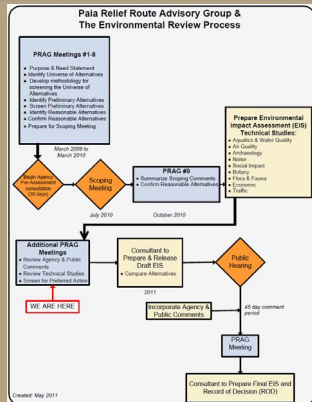
---

---

---

---

---




---

---

---

---

---

---

---

---

---

---

### Next Steps

- Publish Draft EIS in Summer of 2011
- Begin 45 day Comment Period
- Public Hearing held Comment Period
  - Public notice in newspaper
  - Testimony will be taken in written or spoken form
  - A transcript of the hearing will be produced
- Selection of Preferred Alternative
- Final EIS and Record of Decision (ROD)

---

---

---

---

---

---

---

---

### Closing

**Ken Tatsuguchi**  
**Engineering Planning Manager**  
Hawaii Department of  
Transportation



---

---

---

---

---

---

---

---